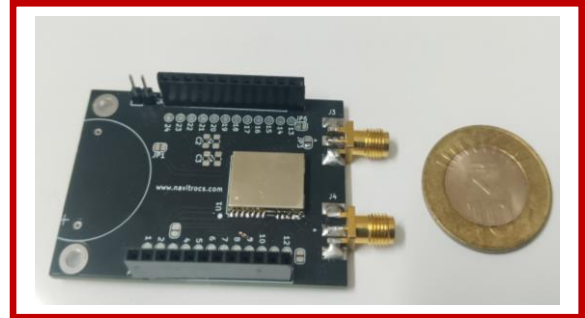




AKSHYA N101-S1

NavIC L5, GAGAN/GPS/Galileo/Beidou/QZSS L1 Receiver Board

- **Supported Constellations:**
 - NavIC L5, GPS L1, Galileo E1, Beidou B1, QZSS L1, SBAS L1 (User selectable)
- **Operating voltage :** 3.3V DC, 5V optional
- **Current Consumption :**
 - Without USB: ~100mA
 - With USB: ~170mA
- **Accuracy:**
 - Position : 2.5m CEP
 - Time : 12ns
 - Velocity: 0.1 m/s
- **Dimension :** 80mm*60mm*20mm (L*W*H)
 - **Customizable as required**
 - **Rugged, premium Anodized Aluminum Casing available**
- **I/O:**
 - Antenna Input : SMA
 - Power Input : DC barrel Jack
 - USB (**optional**)
 - UART data out : 11 pin JST connector
 - 1PPS output : SMA (**optional**)
- **Serial Interface :** 3.3V LVTTTL level UART, (115200 baud rate)
(**Can be configured to 5V TTL**)
- **Protocol :** NMEA-0183 V4.1 (8-N-1)
- **Startup Time:**
 - Cold Start : <30s
 - Hot Start : ~1s
- **Update Rate :** 1 Hz (**Configurable up to 10 Hz**)
- **Sensitivity:**
 - Cold Start : Better than -140 dBm
 - Tracking : Better than -153 dBm
- **Operating Temperature :** -40°C ~ +85°C
- **Storage Temperature :** -55°C ~ +100°C
- **Operational Limits :**
 - Altitude : < 80,000m
 - Velocity : < 510m/s



Navitro Consultancy and Services OPC Pvt Ltd

TA1017, 3rd Avenue, 10th Street, ULLAS, PO-Joteram, Burdwan 713 104, West Bengal, INDIA

E: info@navitrocs.com, W: <https://navitrocs.com>, M: +91 94340 04478

#startupindia

MSME
सूक्ष्म, लघु एवं मध्यम उद्यम
MICRO, SMALL & MEDIUM ENTERPRISES